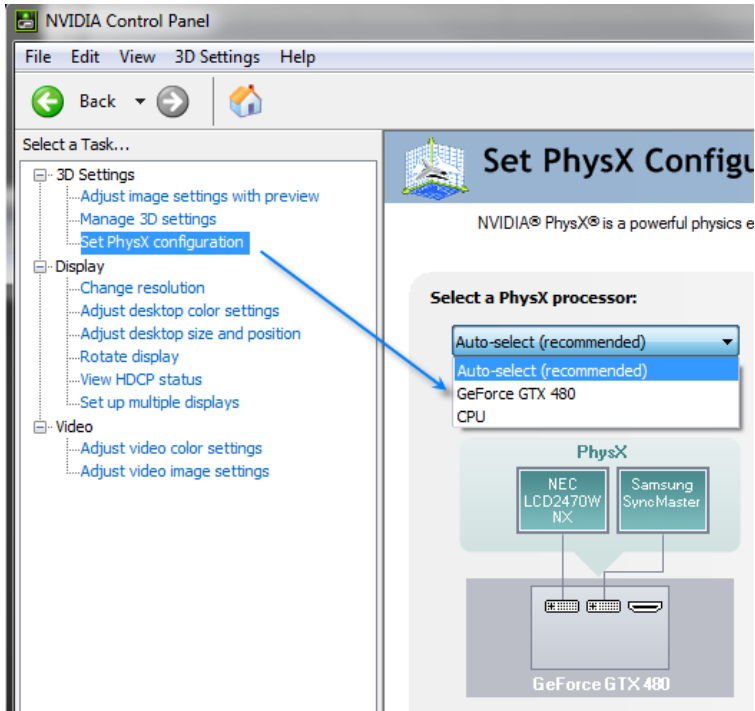


Setting up dedicated GPU for Nvidia Graphics Cards

Windows 7

Part 1

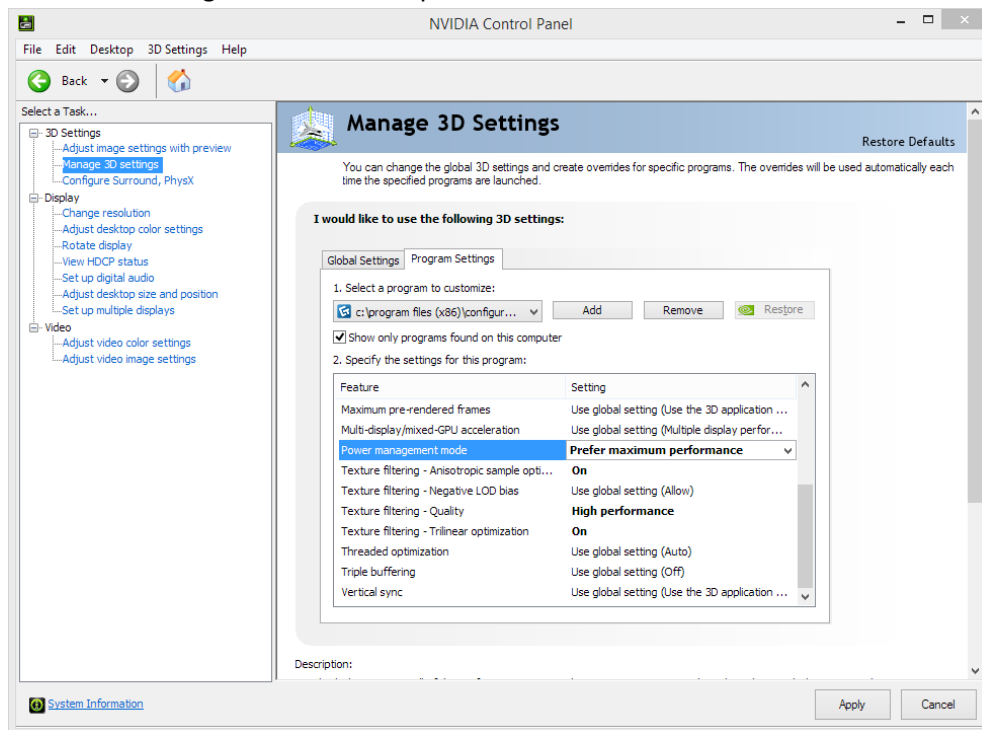
1. Click on the start button
 - a. Type in "Nvidia Control Panel"
 - b. Click on it to open
 - i. Also you can right click on the desktop and select Nvidia control Panel
2. Click on Set PhysX Configuration
 - a. Hit the dropdown and select the dedicated graphics card



- b. Select the dropdown and select the Nvidia GeForce Graphics Card
3. Click Apply at the bottom,
 - a. Close any programs or restart computer if prompted
 4. All set

Part 2

1. Click on the start button
 - a. Type in Nvidia control Panel
 - b. Click on it to open it
 - i. Also you can right click on the desktop and select Nvidia control Panel
2. Click on the Manage 3D settings button
 - a. Click on Add button
 - b. Navigate to the CETDesigner.exe
 - i. 32-bit Windows C:\Program Files\ Configura CET Designer\32-bit\cet.runtime\bin\win32
 - ii. 64-bit Windows
 1. 32-bit CET C:\Program Files (x86)\Configura CET Designer\32-bit\cet.runtime\bin\win32
 2. 64-bit CET C:\Program Files\Configura CET Designer\64-bit\cet.runtime\bin\win64
 - iii. Click on CETDesigner.EXE and hit open



- iv.
 - c. In the features/settings below click the following
 - i. Under Power mode Management
 1. Select Prefer Maximum Performance
 - ii. Under Texture Filtering – Quality
 1. Select High Performance
 - d. At the bottom click on the Apply button
 - e. Complete CETDesigner.exe will use only those settings for its graphics