

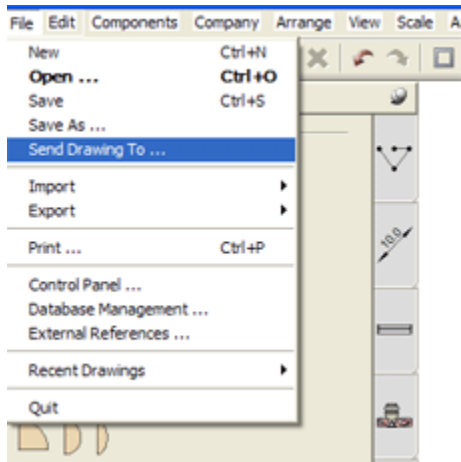
### New Features in Version 3.5, January 8, 2007

Apart from continual enhancements and extensions of existing functionality, InstantPlanner 3.5 offers several new major features, such as:

- New features on the "Pallet Racks Accessories" component tab, including support bars, pallet stop, long side mesh and gable mesh.



- The possibility to attach an InstantPlanner drawing in an e-mail straight from the "File" menu.



- New and easier ways to maneuver the camera height and the target height of the manual camera, without having the "Camera Settings" dialog open.
- The option to reset the default color after changing a generic component (accessories, generic tables and chairs etc.).
- A "Go to" button on the "Accessories" tab to track down items more easily.
- New and better snap function for line drawing components. When positioning a line drawing component, it is now possible to determine exactly which points the line drawing component should find and snap to (for example both mid points and end points or just end points) by using the arrow keys.
- Improved redrawing speed for large drawings.

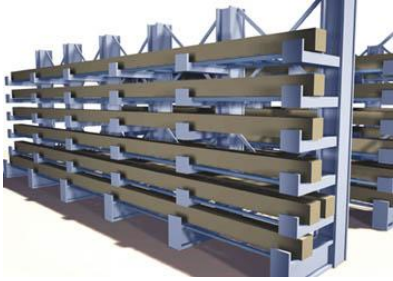
Read more in the InstantPlanner help file.

### **New Features in Version 3.0, October 24, 2005**

InstantPlanner 3.0 introduces a completely new product group - Cantilever systems. In the new version, it is also possible to design drive-in and push-back systems.

#### **Cantilever**

The new product group in InstantPlanner 3.0, Cantilever, allows you to build single or double sided cantilever systems. Under Cantilever Accessories you will also find a variety of accessories for these systems.



Cantilever in InstantPlanner 3.0.

#### **Drive-In/Push-Back**

InstantPlanner 3.0 offers new possibilities for building drive-in and push-back systems. This means that the former product group, High-Density Racks, has been renamed to Drive-In/Push-Back and now contains two different types of systems. Furthermore, you can create product series for both drive-in and push-back systems in the Administrative Tool.

### **Previous Releases**

#### **New Features in 2.6, June 9, 2005**

InstantPlanner 2.6 offers new possibilities for building push-back systems as well as speeding up the design process for pallet racking and shelving by using our new design wizard.



Push-back system in InstantPlanner 2.6.

#### **The top new features in InstantPlanner 2.6:**

##### **1. New InstantPlanner Design Wizard**

Haven't got started with the program yet? Simply would like to produce drawing layouts in InstantPlanner more quickly and effortlessly? Notice the new blue icon in the toolbar!



Clicking on the toolbar icon furthest to the right will open InstantPlanner's brand new **Wizard**, which will guide you quickly through the steps of creating a selective pallet-racking or shelving system and greatly increase your productivity.

Having followed the few easy steps in the wizard, your design is ready - all that remains is to determine the desired number of beam levels. Simply use the "Beams" tool from the "Selective Pallet Racks" section and snap them to your elevation.

## 2. The Added Possibility to Create Push-Back Systems

It is now possible to build push-back systems. Select the "High-Density Racks" section, open the "Design Specifications" dialog and select "Push-back". For more information, take a look at the "InstantPlanner Help".

## 3. Improved Dimensioning

Now there are even more possibilities to pre-set the desired dimension type for the "Auto Dimension" tool. To set your own dimension defaults, simply go to the top of the "Line Drawing" section and select "Defaults". In the dialog that opens, go to the "Dimension" tab.

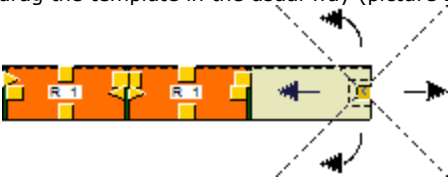
## 4. More Flexible Templates

InstantPlanner's drawing templates can now be stretched even when they contain bays or shelving sections (see picture 1).



Picture 1

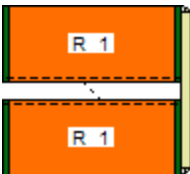
Simply remove the left- or rightmost bay/section in the template, press and hold down the left mouse button and drag the template in the usual way (picture 2).



Picture 2

## 5. Protector Rail for Double Rows

The "Protector Rail" tool in the "Selective Pallet Racks" section now fits double rows, provided that a double template is used (see picture 3 below). To make the protector rail automatically adjust to the double row, simply place the mouse pointer in between the two bays until it stretches out to cover both, and click to drop it in place.



Picture 3

## 6. **AutoCAD**

InstantPlanner 2.6 has received a completely new way of handling the import and export of AutoCAD file formats.

Now it is possible to:

- Import dwg and dxf files created in AutoCAD 2005
- Write dwg and dxf files to AutoCAD 2005

## 7. **Centering Objects in Print Frame**

Now a yellow little box is shown in top right-hand corner of InstantPlanner's "Print frame" tool. If you click on the box, all objects in your drawing will be centered in the printable area of the frame.

## 8. **Search Function for Components on the "Accessories" Tab**

A requested search function is now available on the "Accessories" tab.

## 9. **New Shortcut for Zooming In/Out**

You no longer have to go to the toolbar to access the "Zoom Rectangle". A quicker way of accessing the command is simply to press and hold down the Ctrl key at the same time as you press and hold the mouse button and drag the rectangle across all the components you want to zoom in on.

## 10. **Right-Click to Crop**

The "Crop" command in the "Edit" menu (amongst other things, very useful for cutting out a selected part of a larger imported AutoCAD drawings) is now available as a right-hand click option.

### **New Features in Version 2.5, October 1, 2004**

Upgrade to InstantPlanner® 2.5 and take advantage of the new features, allowing you to build and visualize high-density racks, plan office space using a whole range of new interior items, link information to all generic products in the program and save this in a database, and more.



### **The top new features in InstantPlanner® 2.5**

#### 1. **High-density racks**

A new product category, high-density racks, has been included in InstantPlanner®.

#### 2. **New interior-design products**

In order to be able to visualize a more complete interior, search among the new office, bathroom and kitchen items that are now included in InstantPlanner®.

#### 3. **Price database for generic products**

In the "Calculation" dialog, it is now possible to save descriptions and prices for all generic products in InstantPlanner®.

4. **Changing pallet load**

In the "Settings" dialog (accessed by right-clicking on a selective pallet rack or a high-density rack on the drawing area) a new parameter has been added. The "Max Weight" option allows you to easily change the pallet load.

5. **License handling**

A new and improved way of handling the licence keys has been developed for InstantPlanner®.

**February 5, 2004**

Stow International NV Shortens Lead-times with the Layout Software InstantPlanner®. [Read more->](#)

**New features in version 2.2, March 26, 2004**

1. **Drawing Database Manager**

It is now possible to convert database properties for components from one database to another. This will facilitate the use of favorites in InstantPlanner®. The conversion is performed in the "Drawing Database Manager" in the "Company" menu.

2. **More Flexible Beam Placement**

A new parameter has been added under "Advanced Settings" in the "Design Specifications" dialog. You can now specify the "Pallet Height" (i.e. the height of the load including the pallet). This will easily enable you to add beams at different heights according to the current load.

3. **Foot Plates**

Foot plates that have been added graphically in a drawing layout now also appear in the "Calculation" dialog.

4. **Row Spacers**

Row spacers are now available for double rack models. It is also possible to set the desired number of row spacers per upright and to fill a whole row automatically.

5. **Auto Placement of Shelf Dividers**

There is now a possibility to auto place the desired number of shelf dividers per shelf or the desired number of dividers for all shelves.

6. **Auto Filling of Shelving Accessories**

Labels, front panels, back panels and cross braces can now be inserted automatically on the whole side/back of a shelving system.

**New features & products in version 2.0, November 10, 2003**

1. **Shelving Storage**

A completely new product range has been added to InstantPlanner®. For Shelving Storage, you can create new or edit existing product series in the Administrative Tool.

2. **Shelving Accessories**

A new tab for Shelving Accessories has also been added to the program.

3. **Selective Pallet Racks**

On the Selective Pallet Racks tab, in the Design Specifications dialog, it is now possible to pre-set the design of the uprights.

4. **Pallet Racks Accessories**

The Pallet Racks Accessories tab has been extended with two new automated inserting features that auto fills a whole row with column guards and one side of system with protector rails.

5. **Import Excel Templates**

We have enabled our users to create product series for Selective Pallet Racks and Shelving Storage in the MS Excel format. The product series that you have created can then be imported and used in the program.

6. **Administrative Tool**

A new design setting for pallet racks uprights can be applied in the Administrative Tool.

7. **Calculation and Bill of Material**

The calculation as well as the bill of material now shows information about the current shelf length and the load weight.

8. **Export Bill of Material in XML format**

The possibility to export the calculation information in an XML file is added. This could be useful for communication with for example ERP and CRM systems.