



## Configura graphics engine

In Configura® 7.0, a new graphics engine was launched with purpose to improve the handling of large drawings. In order to take advantage of the performance improvements and to be able to work with large drawings, a certain type of graphics card is required. Please follow the link below to the System Recommendations for more information.

[Configura System Recommendations](#)

### Two graphics modes

You can choose to start Configura in two different graphics modes; **simple graphics mode** (Software rendering) or **advanced graphics mode** (Hardware accelerated graphics). In the advanced graphics mode, you have the ability to handle large drawings better than in the simple graphics mode, but in return, the advanced graphics mode requires more from your computer.

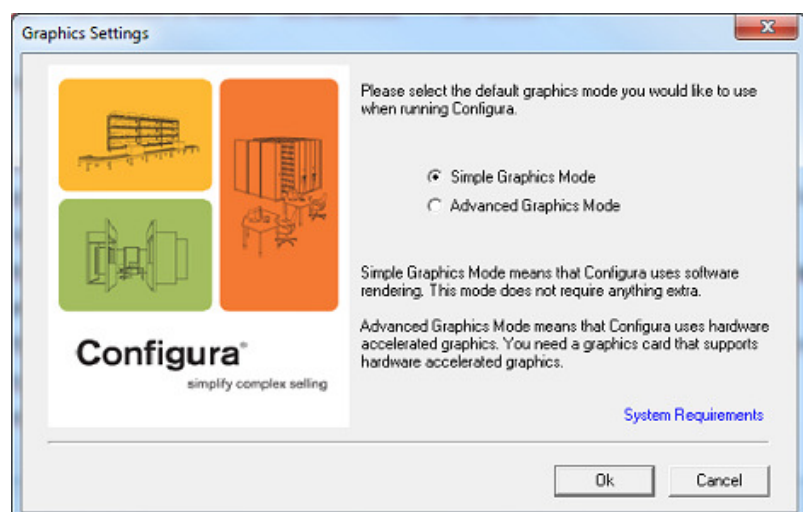
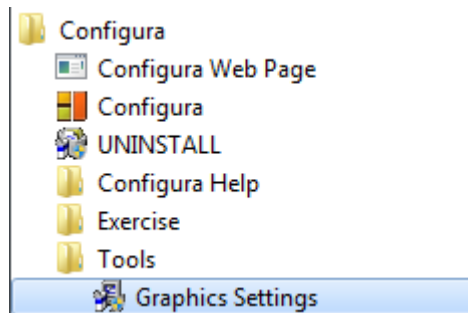
### Selecting graphics mode

Depending on customization, the default mode can differ, and some customizations never run in advanced graphics mode. In these cases, you will not be able to make this choice.

Follow these steps to select graphics mode:

From the **Start** menu, select the **Program** option.

1. Select **Configura**.
2. Select **Tools**.
3. Select **Graphics Settings**.
4. If asked if you want to allow the program to make changes to your computer, answer '**Yes**'.
5. Select the graphics mode that should be the default mode and run each time Configura is started from now on.
6. Click **OK**.





## Automatic test

When choosing to start Configura in advanced graphics mode, an automatic test of your computer is performed to ensure that it is able to run the advanced graphics mode. This will generate one of the three following outcomes:

**Yes** – Your computer meets the requirements to be able to run the advanced graphics mode.

**Warning** – Your computer meets the requirements, although with some reservations. You can run the advanced graphics mode, but may experience some loss in quality.

**No** – Your computer does not meet the requirements and you cannot run the advanced graphics mode. You might for example have an unsupported operating system or graphics card. If you wish to run the advanced graphics mode, please update your computer according to the [System Recommendations](#).